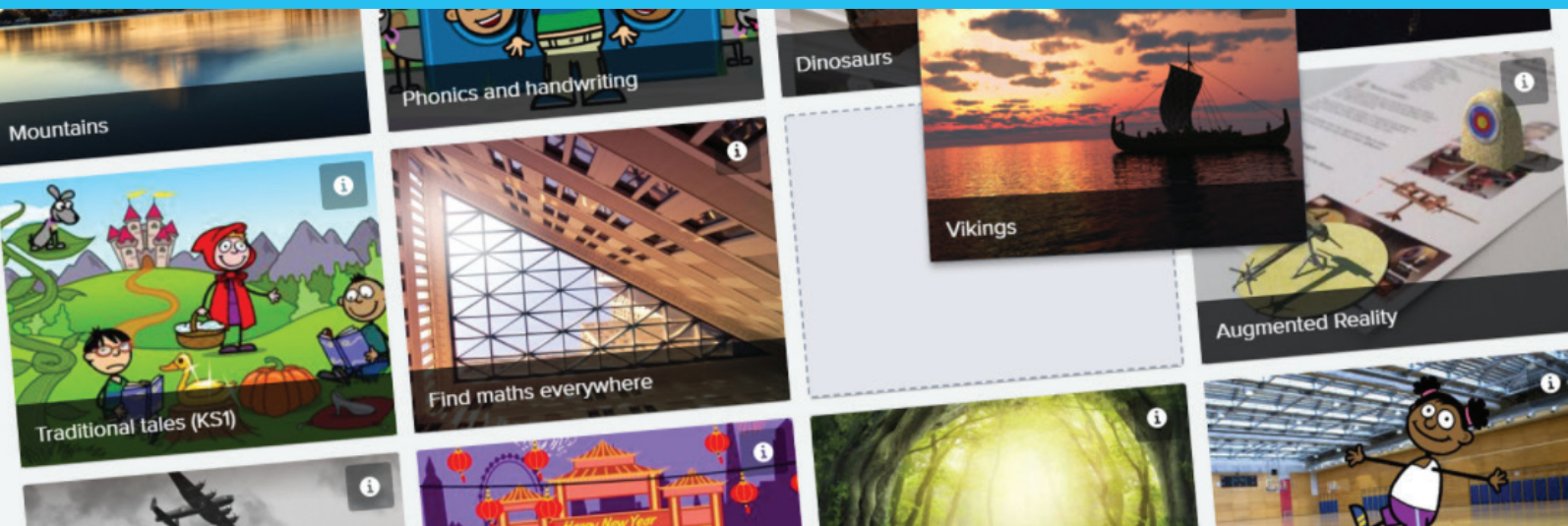




Getting Started Guide

A WHOLE NEW **EXPERIENCE**



Getting started with Discovery Education Espresso

- **Search:** Save time finding lesson materials
- **Discover:** Access ready-curated curriculum resources
- **Personalise:** Collect, save and retrieve your favourite resources
- **Present:** Create, collaborate and display lesson materials
- **Assign:** Assign resources to pupils and monitor progress
- **Track:** Check your pupils understanding by creating quizzes
- **Develop:** Learn new ways to use digital resources in the classroom
- **Support:** Manage your pupils' blended learning experiences

LOGGING IN

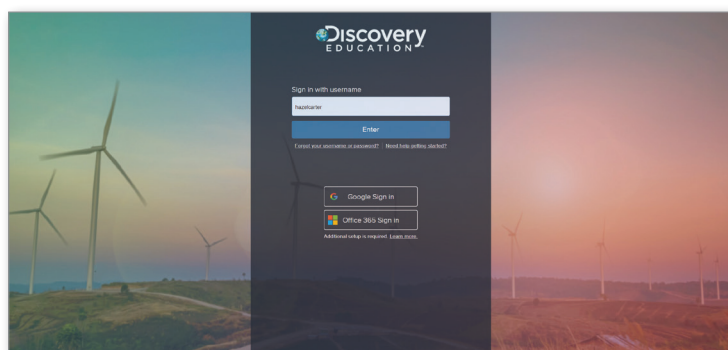
Visit www.discoveryeducation.co.uk and select Experience from the Login dropdown in the top right-hand corner.

Your username is your school email address. If you have not accessed the platform before, you will need to set your password to activate your account.

If your school has been set up with SSO access, please click the relevant box. If you are not sure speak to your ICT Coordinator.

TIP

If this is your first time accessing the platform, don't forget to share your pupils' user credentials with your class. Visit the Help centre for more information.

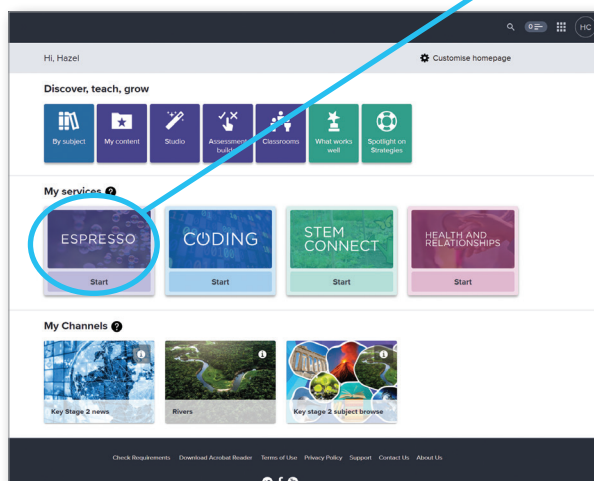


DISCOVER

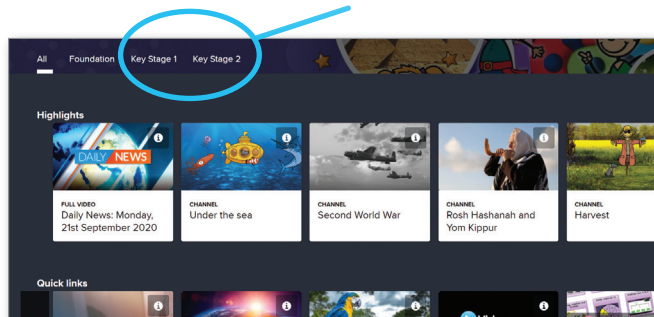
There are a number of ways to discover resources in Discovery Education Espresso.

Browse your Espresso service

Once logged in, the first screen you see will be your homepage where you'll find all the Discovery Education services your school has subscribed to. To access your Espresso service, click 'start' on the Espresso tile.

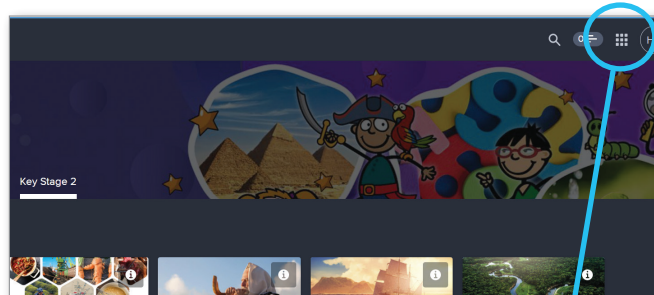


This page has four tabs: All, which contains mixed highlights and new content for all year groups, and Foundation, Key Stage 1 and Key Stage 2 which have highlights, quick links and updates specific to that key stage. You can also click through to our key stage specific subject browse from these tabs.



Don't forget to explore the News area for daily and weekly news stories, Calendar picks for thematic and topical content and Daily challenge for quick activities to do with your pupils.

TIP



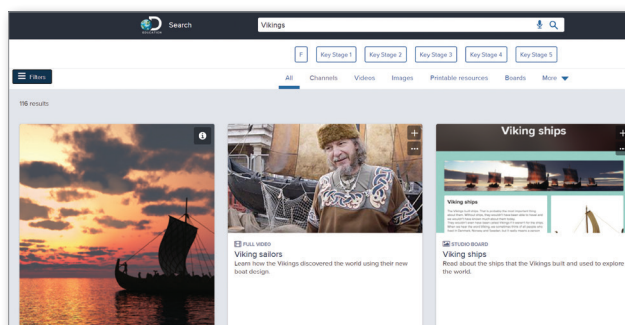
TIP

You can also access the Browse by subject area from the Quick launch available in the top right-hand corner of any page. A useful aid to help you navigate the tools and services you have available to you.

Search for resources

If you are looking for resources for a specific topic or keyword, try using the search bar available at the top of every page.

The visual search results help you quickly identify possible resources. You can filter by resource type and key stage.



Channels

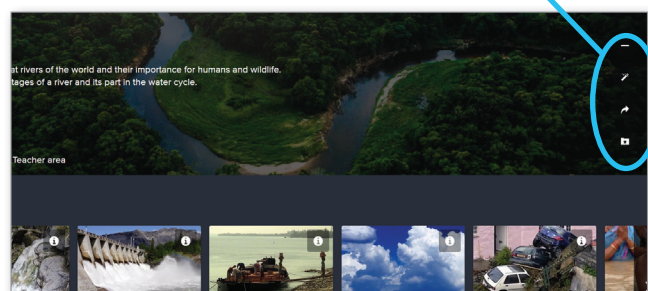
Materials within Espresso are presented in Channels, a collection of resources grouped together by topic, theme or curriculum objective.

Clicking into a channel, you will find a resource tab with videos, interactive activities, worksheets, augmented reality, sounds, images and more.

All Channels contain a Teacher area with an overview of the resources and how they relate to the curriculum, alongside guidance for how to best use them in your classroom.

It's easy to personalise Espresso to your needs. Clicking on the plus icon on the right-hand side will save the Channel to your homepage for quick retrieval. You can also add resources to Studio, copy a URL to share or save to My content.

TIP



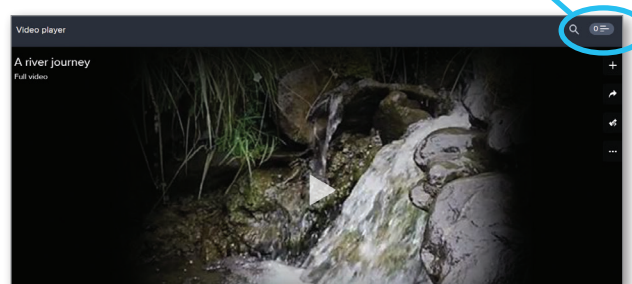
Resource pages

To view any resource in more detail, just click on the selected resource card to access the player page. Here, you will find additional information about the resource, including video transcripts and teacher guidance, as well as suggestions for similar resources to explore.

Again, it's easy to personalise to your needs. You can add the resource to your 'QuickList', copy the resource's URL, assign to pupils, add to Studio or 'save to My content'.

TIP

QuickList is a tool for bookmarking your favourite resources for easy retrieval. You can always access it by clicking your QuickList icon from the top right-hand corner of any page.



TEACH

Your Discovery Education Espresso subscription includes a number of tools to help you save time planning and delivering exciting lessons.

My content

My content is your virtual filing cabinet. You can organise resources in a simple file structure that reflects how you use the resources, for example by topic or differentiated group. You can easily add all resources to My content as well as upload your own resources — a one-stop shop for your digital learning materials.

Studio

Studio allows you to curate content and build learning sequences that engage and inspire your pupils. As a teacher you can use Studio to quickly create and adapt lesson plans as well as set classroom assignments using the templates.

See our online Help centre for more information around using Studio.

TIP



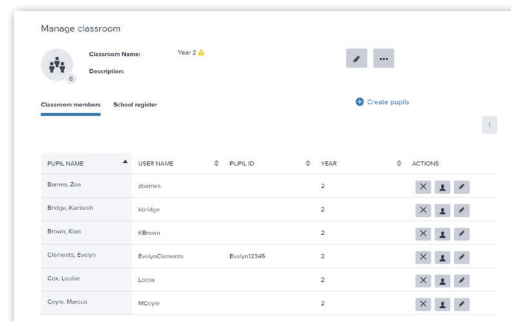
Pupils can also create their own Studio boards, as well as work collaboratively on projects, enabling them to engage more deeply with materials and demonstrate their understanding.

Assessment builder

Easily build multiple-choice quizzes to check their knowledge and understanding. Quizzes can be assigned to individual pupils, groups or the whole class.

Classrooms

Used to monitor all pupil work and progress. In Classrooms you can see what you have assigned to your pupils and check if they have completed the assignments. You can also see all your pupils' Studio boards in one place.



GROW

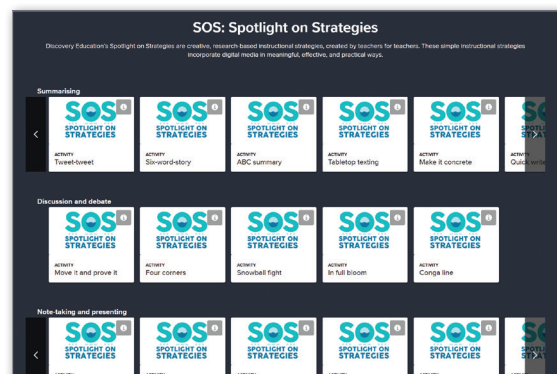
You can find a number of resources within Discovery Education Espresso that will help you as an educator.

What works well

Brings together a selection of materials created by educational practitioners as suggestions to help you get the very best out of your digital resources, whether you are teaching in class or remotely.

Spotlight on strategies

Creative, research-based strategies to help you incorporate digital media in meaningful, effective and practical ways.



For additional help and support visit our Help centre
help.discoveryeducation.co.uk